



The Drive, West Finchley, N3 1AE
Guide Price £550,000 Share of Freehold Council Tax Band E

REAL ESTATES
Est. 1981

Estate Agents · Residential Sales · Investments · Lettings

Real Estates are delighted to bring to the market this TWO DOUBLE BEDROOM TOP FLOOR apartment set in the iconic GRADE II LISTED Cedar Court, accessed via a GATED DRIVEWAY with residents parking and surrounded by stunning COMMUNAL GARDENS.

This SHARE OF FREEHOLD property offers an abundance of character throughout, including sash windows and a stained glass front door. There is a large separate kitchen with space to eat and a small balcony, two excellent sized bedrooms and a well-maintained bathroom. A large reception room completes the accommodation with access onto another larger private balcony. Loft space is available for storage via a hatch in the hallway.

Cedar Court is a unique building in a quiet, secluded location just a stone's throw away from West Finchley Northern Line Underground Station whilst the shops, cafes and restaurants of Ballards Lane are within easy reach.

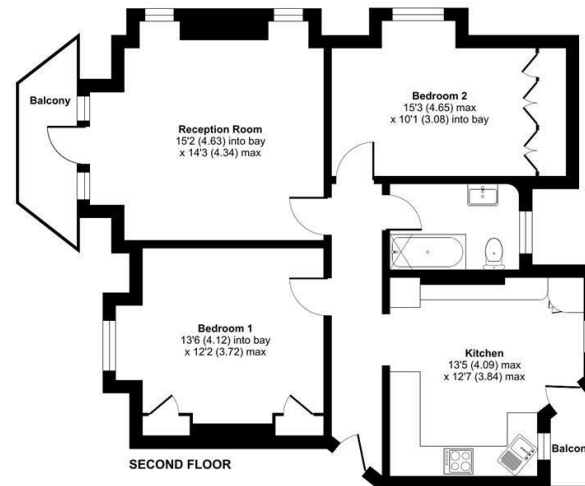
SHARE OF FREEHOLD. Service Charge: £330 pm. Lease 949 years. Ground Rent £0. Sole Agent





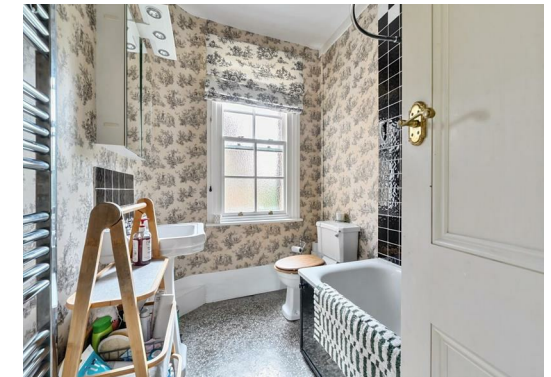
Cedar Court, The Drive, London, N3

Approximate Area = 775 sq ft / 71.9 sq m
For identification only - Not to scale



Floor plan produced in accordance with RICS Property Measurement 2nd Edition, incorporating International Property Measurement Standards (IPMS2 Residential). © richcom 2025. Produced for Real Estates. REF: 1287582

Energy Efficiency Rating		
	Current	Potential
Very energy efficient - lower running costs		
A		
B		
C		
D		
E		
F		
G		
Not energy efficient - higher running costs		
EU Directive		



Real Estates Woodside Park Office:
14/14a Sussex Ring
Woodside Park N12 7HX

ll : 020 8445 6387
e : info@realestates-wsp.co.uk
w : www.realestates-wsp.co.uk